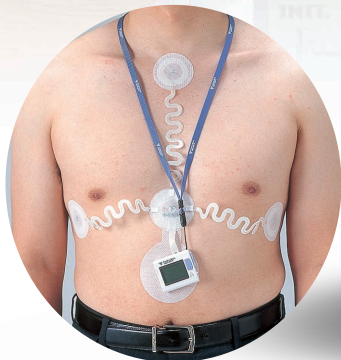
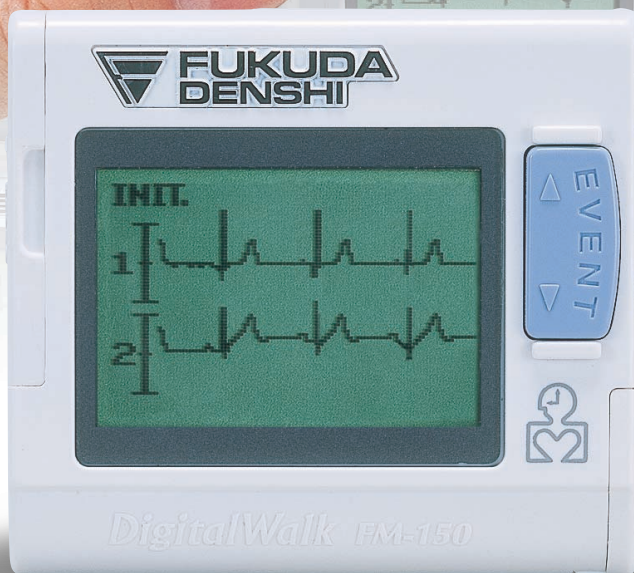


Digital Holter ECG Recorder

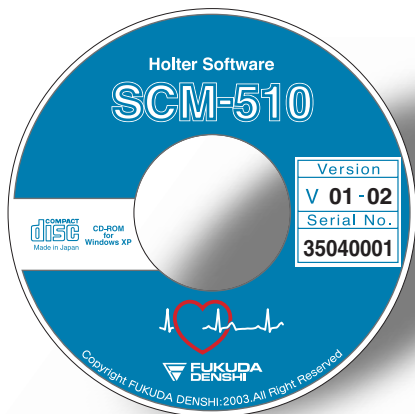
Digital Walk FM-150

40g!

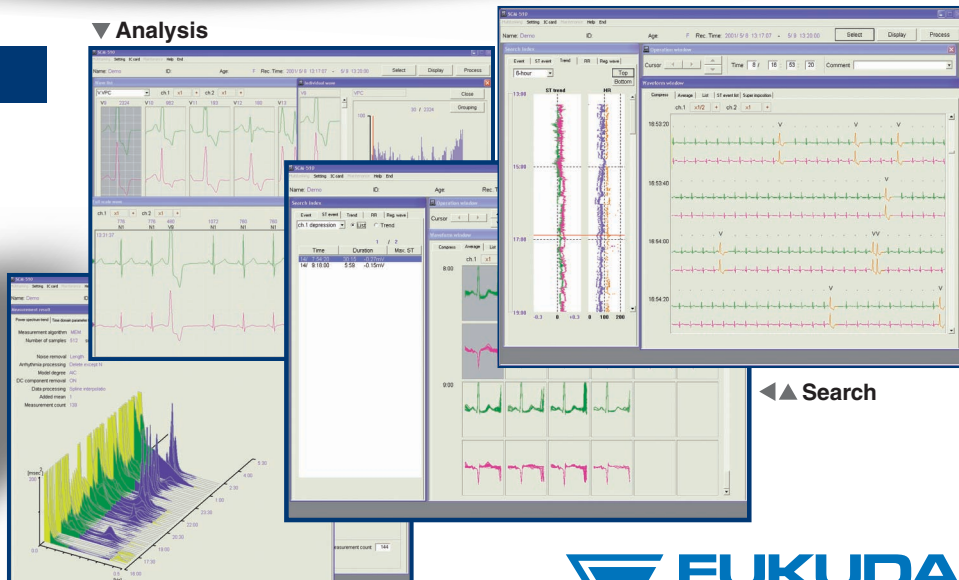


SCM-510

Holter Software



▼ Analysis



▲ Measurement



Features

- **Weighting only 40g**
- **2-channel ECG recording**
- **The LCD displays real-time ECG waveforms**
- **Hygienic, disposable T-type electrodes do not require any conventional lead cable.**
- **Pacemaker pulse detection function**
- **Large-capacity Multi Media Card(MMC) for high quality waveform recording**

FM-150 Specifications

Function	
Recording time	24 hours of continuous recording
Internal clock	Count of Year, Month, Day, Hour and Minute
ECG	
Leads	2-channel
Input impedance	10MΩ or more
Frequency response	0.05~40 Hz
Sampling Frequency	125 Hz
Storage Media	
Type	Multi Media Card (MMC)
Capacity	32MB or more
General	
Power supply	One AAA alkaline (LR-03)
Safety	Internally powered equipment, Type B
Operating temperature	0~40°C
Operating humidity	30~85% (No condensation)
Dimensions	49.5 mm(W) x 14.7mm(D) x 44.5mm(H)
Weight	Approx. 40g (Incl. battery and MMC)
Standard Accessories	
Multi Media Card	MMC-32
Disposable electrode	TE-177M
Skin cleaner	OA-426
Strap	OA-311
Disposable carrying case	AB-150C
Battery	One AAA alkaline dry cell
Storage case	AB-150S
Operation manual	

SCM-510 Holter Software

The WINDOWS™ based software performs multiple tasks including sophisticated compilation of data for detailed reports.

SCM-510 Operating Environment

Personal Computer	
OS	Windows XP Professional (English version)
CPU	Pentium III 1 GHz or higher
RAM	512MB or more
Hard disk free space	20GB or more (including the program)
Display graphic mode	1280 x 1024
Display font size	Normal size
CD-ROM drive	12 x or higher

Card reader

Card type	Multimedia card can be read or written
-----------	----------------------------------------

Printer

Type	Laser printer
Resolution	600dpi or more
RAM	64MB or more
Paper size	A4 or Letter

Software Specifications

Analysis	Number of analysis channels	2 channel
	Arrhythmia	10 types
	Morphology	8 types x 64 patterns
	Program	3 types
	Analysis Time	approximately 2 min/patient
Measurement	Arrhythmia measurements	
	ST measurements	
	HRV measurements	Manual mode, Auto mode
	Lorenz plot	
Search	Pacemaker measurements	
	Event search	
	ST event search	
	Trend search	
	RR search	
Printing	Registered wave search	
	Report	19 types (Standard ECG reports) 10 types (HRV measurement) 6 types (Lorenz plot)
	Program	3 types
	Multitasking	Morphology Search Measurement

FUKUDA DENSHI reserves the right to change specifications without notice.



FUKUDA DENSHI CO., LTD.

39-4, Hongo 3-chome, Bunkyo-ku, Tokyo 113-8483, Japan
Tel: +81-3-5684-1455 Fax: +81-3-3814-1222

Distributed by: